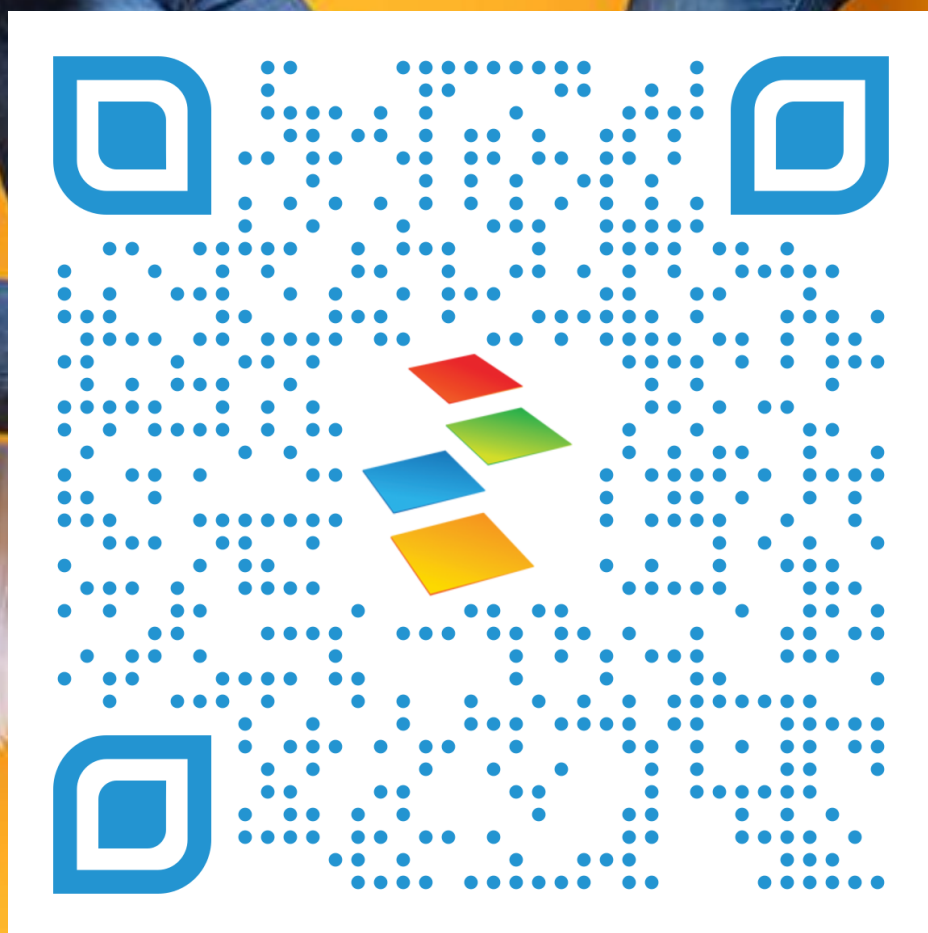




Optimize Business Processes

By Leveraging Microsoft D365 Finance and Supply Chain





Housekeeping

- Please silence your phones. If you need to take a call, feel free to step outside and come back in.
- Sessions are being recorded and will be available after.
- Please use this QR code to take the session survey before heading to the next session.
- Survey responses get you more entries into the raffle at the end of the day. (prizes included Surface headphones, Smart Ray Bans, RayBan Meta Smart Bluetooth Glasses, and lots more).
- Wifi Info: BusinessTechnologySummit
Password: journeyteam!



Presenters



BRIAN GOTT
FUNCTIONAL CONSULTANT



KERRY KENNEDY
FUNCTIONAL CONSULTANT

Business Processes

REVIEWED AND EVALUATED DURING DISCOVERY AND DESIGN

Navigating the complexities of business processes and ERP implementation demands strategic foresight.

At JourneyTEAM, we specialize in guiding organizations through this intricate maze, ensuring a forward-thinking and efficient journey.





3 Case Studies

- Standard Costing
- Commissions
- Planning Optimization with Finite Capacity



Standard Costing

Case Study 1



Standard Cost

CHALLENGES

Not enough detail to generate initial standard cost

Inaccurate assumptions about material, labor and overhead

Time consuming to gather data



Case Study

STANDARD COST

Prior to D365 FSC

Costs allocated
equally across all
items



With D365 FSC

Labor costs allocated
based on actual time
captured using
production floor
execution

Detailed Costs in D365 FSC

COST CATEGORIES

Filter

Quality
Quality Inspection

Standard view ▼

Cost categories

Category ID	Category name
Quality	Quality Inspection

Usage

Use in Project No

Production

Category	Cost price	Worker	Cost group
Quality	20.00		C8

Ledger postings

ACCOUNTS - PHYSICAL	ACCOUNTS - FINANCIAL
Estimated manufacturing cost absorbed <input type="text" value="600500"/>	Manufacturing cost absorbed <input type="text" value="600500"/>
Estimated cost of manufacturing cons... <input type="text" value="150200"/>	Cost of manufacturing consumed, WIP <input type="text" value="150100"/>

Detailed Costs in D365 FSC

ROUTE PROCESS TIMES

<input checked="" type="checkbox"/>	80	Primary	QLTY	Quality Check
	90	Primary	PCKG	Package

[+ New](#) [Delete](#) [Applicable resources](#) [Maintain resource requirements](#)

[Overview](#) [General](#) [Setup](#) [Times](#) [Resource load](#) [Resource requirements](#) [Description](#)

TIMES		OVERLAP
Queue time before	Hours/time	Transfer batch
	1.0000	
Setup time	Process quantity	
	1.00	
Run time		
	0.05	

Detailed Costs in D365 FSC

PRODUCTION FLOOR EXECUTION

All jobs Active jobs
TUESDAY 2/13/2024 11:50 PM

✓	Order	Description	Product	Reques...	Started	Comple...	Scrapped	Remain...	U..	CW req...	CW
	B000051	Triming and cutting f...	P0111	3.00		0.00	0.00	3.00	ea		
	P000173	Speaker assembly	D0003	20.00		0.00	0.00	20.00	ea		
✓	P000275	Cabinet polishing	D0002	1.00		0.00	0.00	1.00	ea		
	P000275	Assembly	D0002	1.00		0.00	0.00	1.00	ea		
	P000275	Foam padding	D0002	1.00		0.00	0.00	1.00	ea		

Cabinet polishing • Primary • 10

Job type
Process

Product
D0002
Cabinet

From
6/6/2023 10:00:00 AM

Previous operation
None

To
6/6/2023 11:30:00 AM

Active employees

0%



Commissions

Case Study 2

Commissions

CHALLENGES

Not Standardized

Managed outside the system
(Excel)

Time consuming

Manual assignment of commission
on every sales order line



Case Study

COMMISSIONS

Prior to D365 FSC

Manually selecting
commission on individual
sales lines

Commission liability reported
at the end of the month



With D365 FSC

Standard commissions
based on item-customer
relationship

Commission liability reported
at sales invoice posting



Planning Optimization

Case Study 3

- Material Resource Planning
- Planning Optimization
- Finite Capacity

Planning Optimization with Finite Capacity

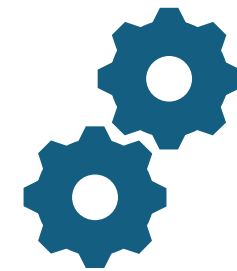
CHALLENGES



Highly Complex

Knowledge of production processes

Knowledge of resource capacity



Requirements

Accurate and detailed:

Demand data

BOMs

Routes

Operation times

Machine capacity

Labor capacity



Case Study

PLANNING OPTIMIZATION

GOALS

Provide accurate ship dates to customers

Meet production deadlines

Optimize resource utilization

Address resource bottlenecks

APPROACH

Update Coverage Group settings

- Coverage time fences
- Capacity scheduling time fence

Validate and update route times

- Queue, Setup, Process & Transit times

Validate number of Resources and Resource Groups

- Resource capabilities can be configured for resources that move between work centers

Coverage Groups

PLANNING OPTIMIZATION WITH FINITE CAPACITY

The screenshot displays the SAP Coverage Groups configuration interface. On the left is a navigation pane with a search filter and a list of coverage groups. The 'Period-20' group is selected. The main area shows configuration details for this group, organized into sections: General, PLANNED ORDER, REQUISITION, FORECAST PLAN, and SAFETY MARGINS IN DAYS. Several input fields are highlighted with blue boxes.

Coverage group	Name	Calendar
Period-20	Period- 20 days	

General

COVERAGE	Coverage time fence (days)	Positive days
Coverage code	100	100
Period	Negative days	Planning priority model
Coverage period	2	
	20	

PLANNED ORDER

Requested production status	Scheduled
Automatic firming time fence (days)	0
Freeze time fence (days)	0
BOM explosion time fence (days)	100
Capacity scheduling time fence (days)	100

REQUISITION

Approved requisitions time fence (days)	0
---	---

FORECAST PLAN

Forecast plan time fence	100
Reduction key	4wm
Reduce forecast by	Orders

SAFETY MARGINS IN DAYS

Receipt margin added to requirement ...	0
Issue margin deducted from requirem...	0
Reorder margin added to item lead time	0

Other

Include intercompany orders	<input checked="" type="checkbox"/> Yes
Include customer forecast in the dema...	<input checked="" type="checkbox"/> Yes

Route Times

PLANNING OPTIMIZATION WITH FINITE CAPACITY

Route details : 000082 | 000082 : Product model no. High End Speaker (D0004) (High E)

Standard view

<input type="radio"/>	Oper. No.	Priority	Operation	Name
<input type="radio"/>	10	Primary	Assembly	Assembly
<input type="radio"/>	20	Primary	Finishing	Finishing
<input type="radio"/>	30	Primary	Testing	Speaker testing and calibration
<input checked="" type="radio"/>	40	Primary	Packing	Packing

Overview General Setup Times Resource load

TIMES		OVERLAP
Queue time before	Hours/time	Transfer batch
	1.0000	
Setup time	Process quantity	
	15.00	
Run time		
	1.00	
Transit time		
Queue time after		

Resources

PLANNING OPTIMIZATION WITH FINITE CAPACITY

	Polishing worker 1	Human resources
<input checked="" type="checkbox"/>	Polishing worker 2	Human resources
	Polishing worker 3	Human resources
	Polishing worker 4	Human resources

Standard view

Resources

Resource	Description	Type
1112	Polishing worker 2	Human resources

Operation

Calendars

Calendar	Expiration
Production	Never

Capabilities

+ Add Remove Edit View

Capability	Description	Expiration	Level	Priority
Polishing	Polishing	Never	0.00	0
Assembly	Assembly	Never	0.00	0
Cabinets	Cabinet production	Never	0.00	0

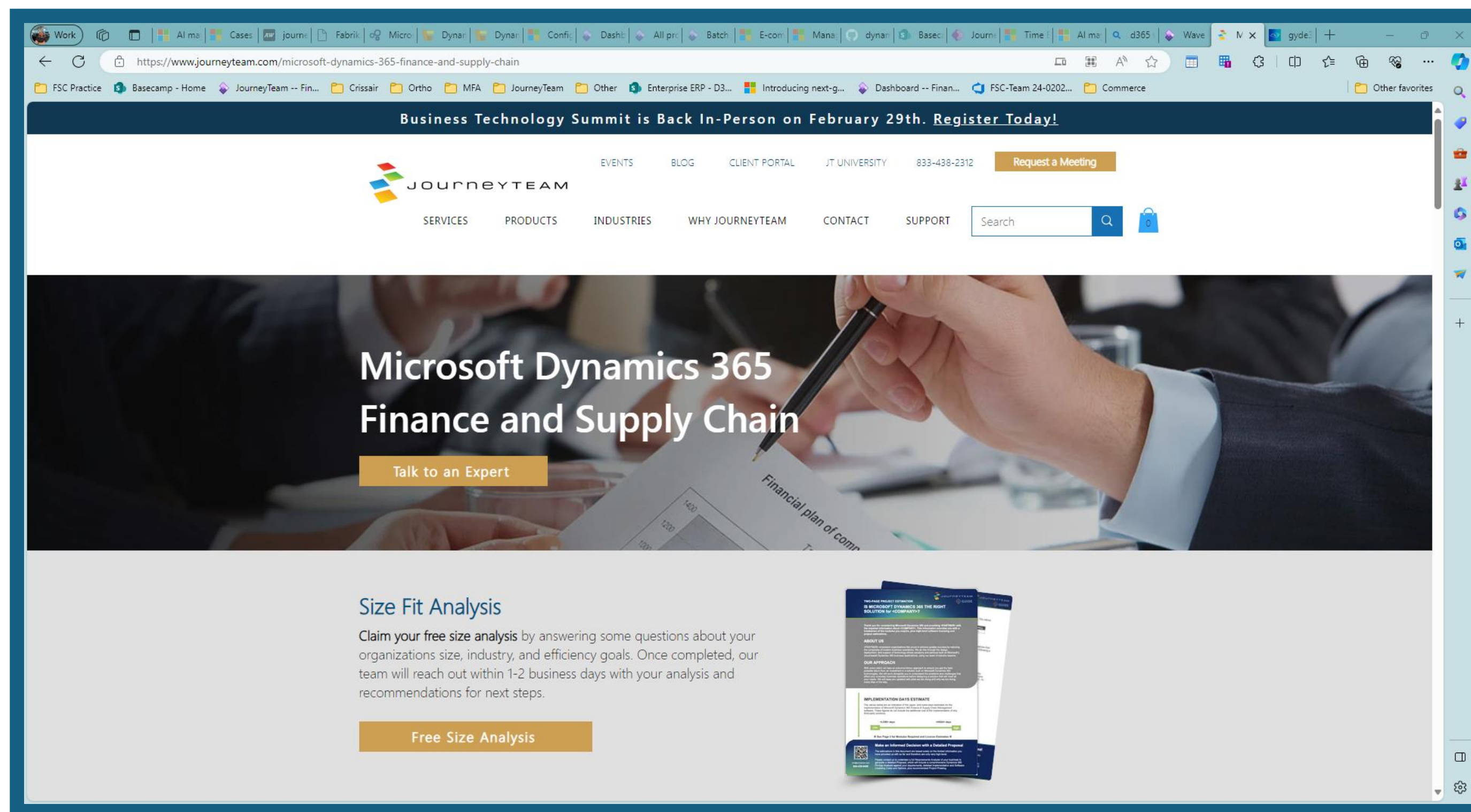
- Optimized Production Planning
- Optimized Resource Planning
- Optimized Purchasing Process

Business Process and ERP Working Together

Claim Your Free Size Analysis

JourneyTEAM GUIDE | ERP Sizing Analysis

[journeyteam.com/microsoft-dynamics-365-finance-and-supply-chain](https://www.journeyteam.com/microsoft-dynamics-365-finance-and-supply-chain)

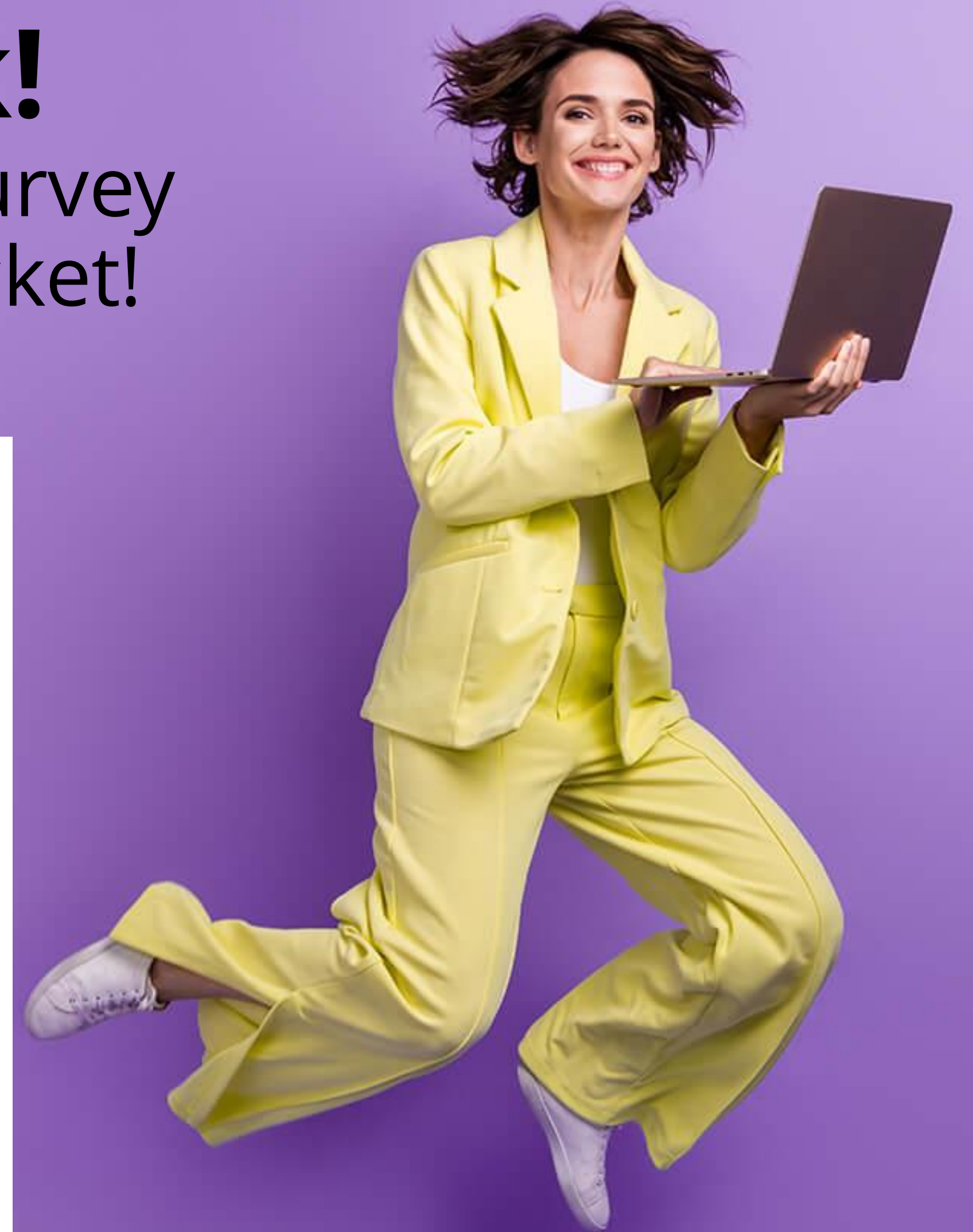




Questions

We love feedback!

Please complete the session survey for an extra giveaway raffle ticket!





Thank You!

Let's Connect:

Brian Gott

Kerry Kennedy

Info@journeyteam.com

