



# Cutting Costs by Moving Your Data Estate to Microsoft







# Housekeeping

- Please silence your phones. If you need to take a call, feel free to step outside and come back in.
- Sessions are being recorded and will be available after.
- Please use this QR code to take the session survey before heading to the next session.
- Survey responses get you more entries into the raffle at the end of the day. (prizes included surface headphones, Smart Ray Bans, RayBan Meta Smart Bluetooth Glasses, and lots more).
- **Wifi Info:** BusinessTechnologySummit
- **Password:** journeyteam!



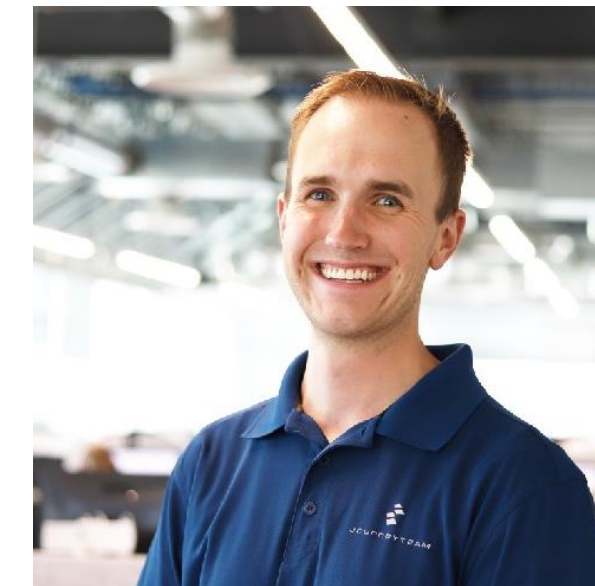


# Presenters



**JASON FIFE**

DATA ENGINEERING PRACTICE MANAGER



**PRESTON REYNOLDS**

BUSINESS INTELLIGENCE DIRECTOR





## The Goal:

See the ***full scope*** and benefits of moving your data estate to Microsoft.

*Hint: Its more than just how to run SQL Server on cloud resources*


# Agenda

- Demographics Research
- Common misconceptions about cost cutting efforts
- Benefits of moving to your data estate to Microsoft
- Dos and Don'ts





To join, go to: [ahaslides.com/EZD25](https://ahaslides.com/EZD25) 


 AhaSlides

# Leaderboard

Click to open leaderboard

 Menu

 This only works in the full-screen window. [Learn more](#)

 0





“The global market for data and data analytics will be \$135 billion by 2025”

---

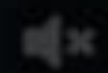
- Forbes





# Biggest Misconceptions!





To join, go to: [ahaslides.com/EZD25](https://ahaslides.com/EZD25)

## Question 4 of 10

Click to continue quiz

Start the Quiz!



# Where are On-Prem Costs Incurred?

Physical security

Hardware costs

Building & facility costs

Utilities & insurance expenses

Maintenance & upgrades expenses

Staffing costs or shortages

Lack of scaling and flexibility

Integration & compatibility issues

Downtime & performance

Backup & recovery

Hyper-specialized skillsets required





# Ten Cost Benefits of Moving your Data Estate to Microsoft Azure





# Pay-As-You-Go Pricing

A woman with dark curly hair, wearing a light blue button-down shirt, is smiling and looking towards the left. She is holding a blue credit card in her right hand, which is being used to pay for a green smoothie in a clear plastic cup with a black straw. The background is a bright, modern juice bar or cafe with white shelves holding various items, including a basket of lemons and a small potted plant. The overall atmosphere is clean and professional.



A person with curly hair, wearing a yellow knit sweater, is sitting at a wooden desk. They are using a silver laptop and a smartphone. A grey coffee cup is on the desk. The background is slightly blurred, showing a desk lamp and some papers. The text "Lowered Operational Costs" is overlaid in white, bold font, with a white underline.

# Lowered Operational Costs



A construction site with multiple cranes and a city skyline in the background, featuring a prominent clock tower. The scene is dimly lit, suggesting dusk or dawn. The cranes are blue and yellow, and the buildings are in shades of grey and blue. The text "Reduced Infrastructure Costs" is overlaid in white, bold, sans-serif font across the center of the image.

# Reduced Infrastructure Costs



# Scalability and Flexibility







# **Economies of Scale**

---





**No Upfront Capital  
Expenditure**



# Improved Cost Management and Monitoring





A dramatic photograph of a volcanic eruption. A massive, dark, and billowing plume of ash and smoke rises vertically from a mountain, filling much of the sky. The plume has a textured, cauliflower-like appearance. In the foreground, the dark silhouette of a mountain ridge is visible, along with some utility poles and power lines. The overall scene is dark and powerful, capturing the scale of the natural event.

# Disaster Recovery and High Availability

---



A blurred background image of a modern industrial factory. A large, white robotic arm is the central focus, positioned over a workbench. The background shows various pieces of machinery, pipes, and structural elements of the factory, all slightly out of focus to emphasize the text.

# Innovation and Reduced Time-to- Market

---





# Compliance and Security Savings





To join, go to: [ahaslides.com/EZD25](https://ahaslides.com/EZD25) 



# Question 3 of 10

Click to continue quiz

Start the Quiz!

 Menu

 This only works in the full-screen window. [Learn more](#)

 0  0





# Takeaways

- Dos and Don'ts
- Case Study



# Power BI

## DO

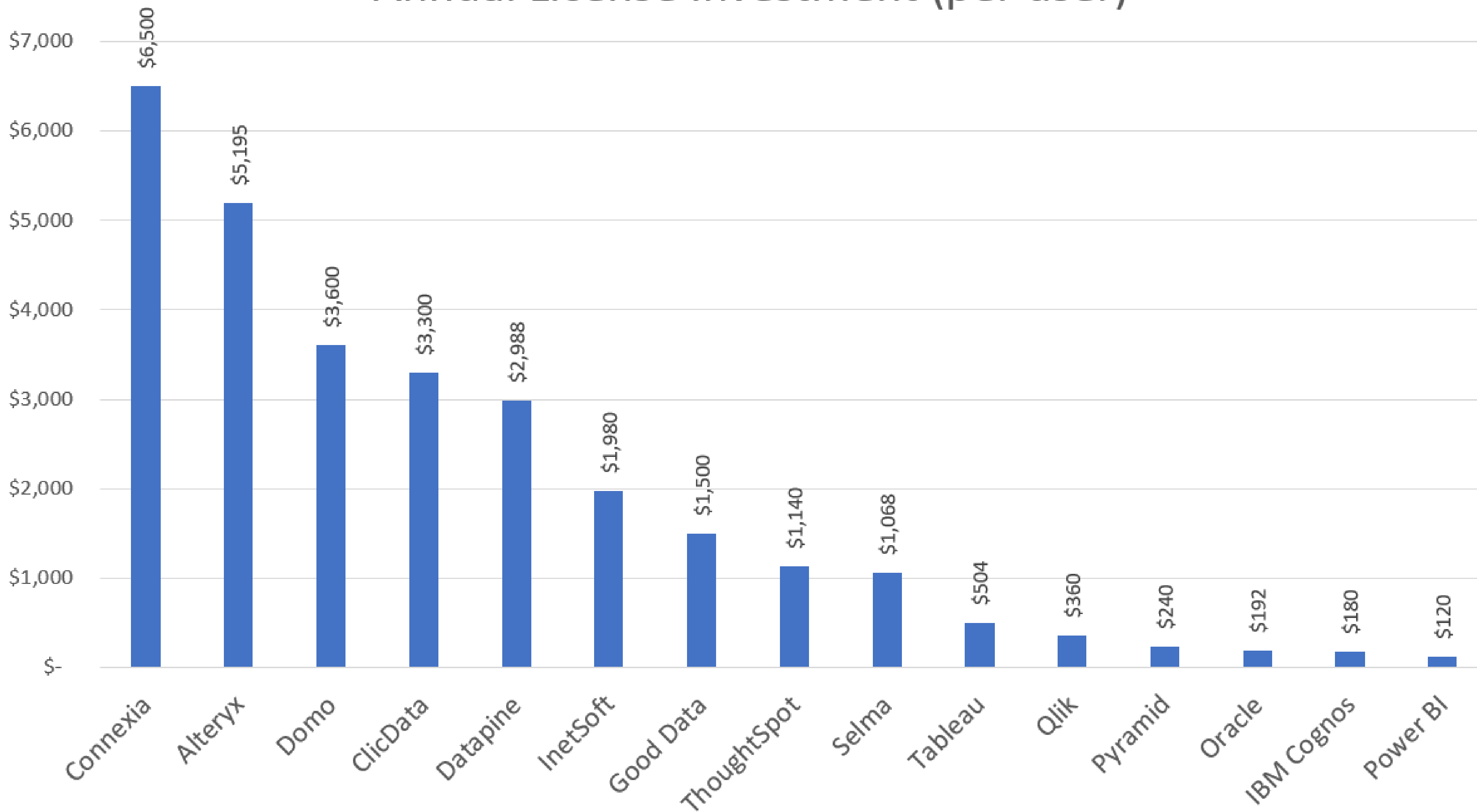
- Switch to Power BI
- Ensure you are using the correct licensing
  - Power BI Pro is included in an E5/M5 license
- Ensure your team knows how to use the tool accurately and efficiently
- Utilize Power BI Pro for Collaboration

## DON'T

- Underestimate the cost of bad data
- Neglect the Importance of a Data Strategy
- Create Unnecessary Reports and Dashboards



# Annual License Investment (per user)





# Case Study No. 1: Large Bottling Company

## Domo → Power BI Migration

### Challenges

- Data refreshed only once a week
- Refresh took \_\_\_ hours
- High per user costs (~\$270/user/mo.)

### Domo

- \$1.2 Million/year on REFRESHES of data in Domo
  - Dataset refresh cost \$20,000/refresh
  - Average of \$270/user

**Total:** \$1,200,000/year

### Solution

- Move to Power BI
- Create aggregate models
- Utilize incremental loads
- Share with the whole company

### Power BI

- Migrated to Power BI
- Refreshes Intra-day
- Expanded user base across the company

**Total:** \$62,000/year

**Savings:** \$1,138,000/year



# Azure Synapse, SQL, Data Factory, Databricks

## DO

- Use Azure Advisor
- Look at Cost Analysis
- Build incremental loads
- Look at reservations
- Use low-code judiciously

## DON'T

- Let data pipelines run wild
- Use dedicated compute
- Lose sight of the prize



# Azure Data Factory - Runtime and Activity

|  | Azure IR  | Azure Managed Vnet IR | Self-Hosted IR |
|--|-----------|-----------------------|----------------|
| Orchestration (per 1000):<br><i>Pipeline, Activity, Debug, Trigger</i>         | \$1       | \$1                   | \$1.50         |
| Data Movement (per DIU-hour):<br><i>Copy Data Activity</i>                     | \$0.25    | \$0.25                | \$0.10         |
| Pipeline Activity (per hour):<br><i>Lookup, Get Metadata, Delete</i>           | \$0.005   | \$1                   | \$0.002        |
| External Activity (per hour):<br><i>Stored Procedure, Notebook, Databricks</i> | \$0.00025 | \$1                   | \$0.0001       |



# Case Study No. 2: International Manufacturer

## On-premises Data Warehouse → Azure Migration

### Legacy Challenges

- ETL process: 4 hours
- Supply chain datasets: 3 hours
- ERP migration
- On-prem hardware, licenses
- Support staff strain

### Legacy Cost

- Capital expense
- Support staff
- Opportunity loss

**Total:** ~\$200,000/year

### Azure Data Solution

- ETL process: 35 minutes
- Supply chain datasets: 12 minutes

### Power BI

- Migrated to Power BI
- Refreshes Intra-day
- Expanded user base across the company

**Total:** \$19,993/year

**Savings:** ~\$180,007/year





## Next steps

- Power BI Tenant Health Check
  - \$5,000-\$13,000
- Data Strategy Roadmap
  - \$5,000
- Migration Assessment
  - \$8,000
- Just give us a call!
  - Priceless



# 29% OFF

THIS WEEK ONLY



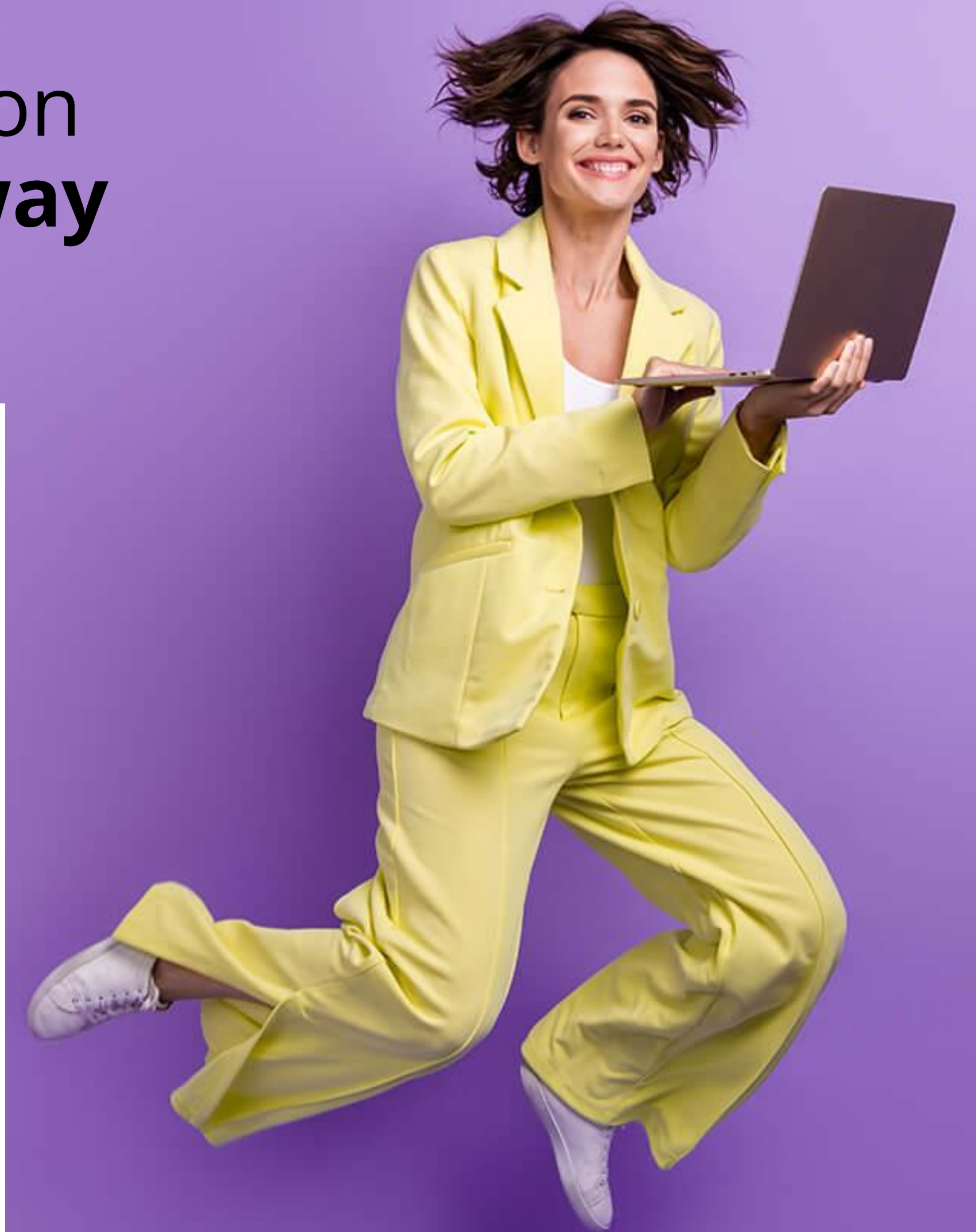
# Q & A Session





# We love feedback!

Please complete the session survey for **an extra giveaway raffle ticket!**







# Thank You!

**Let's Connect!**

**Jason Fife**

**Preston Reynolds**

[info@journeyteam.com](mailto:info@journeyteam.com)

